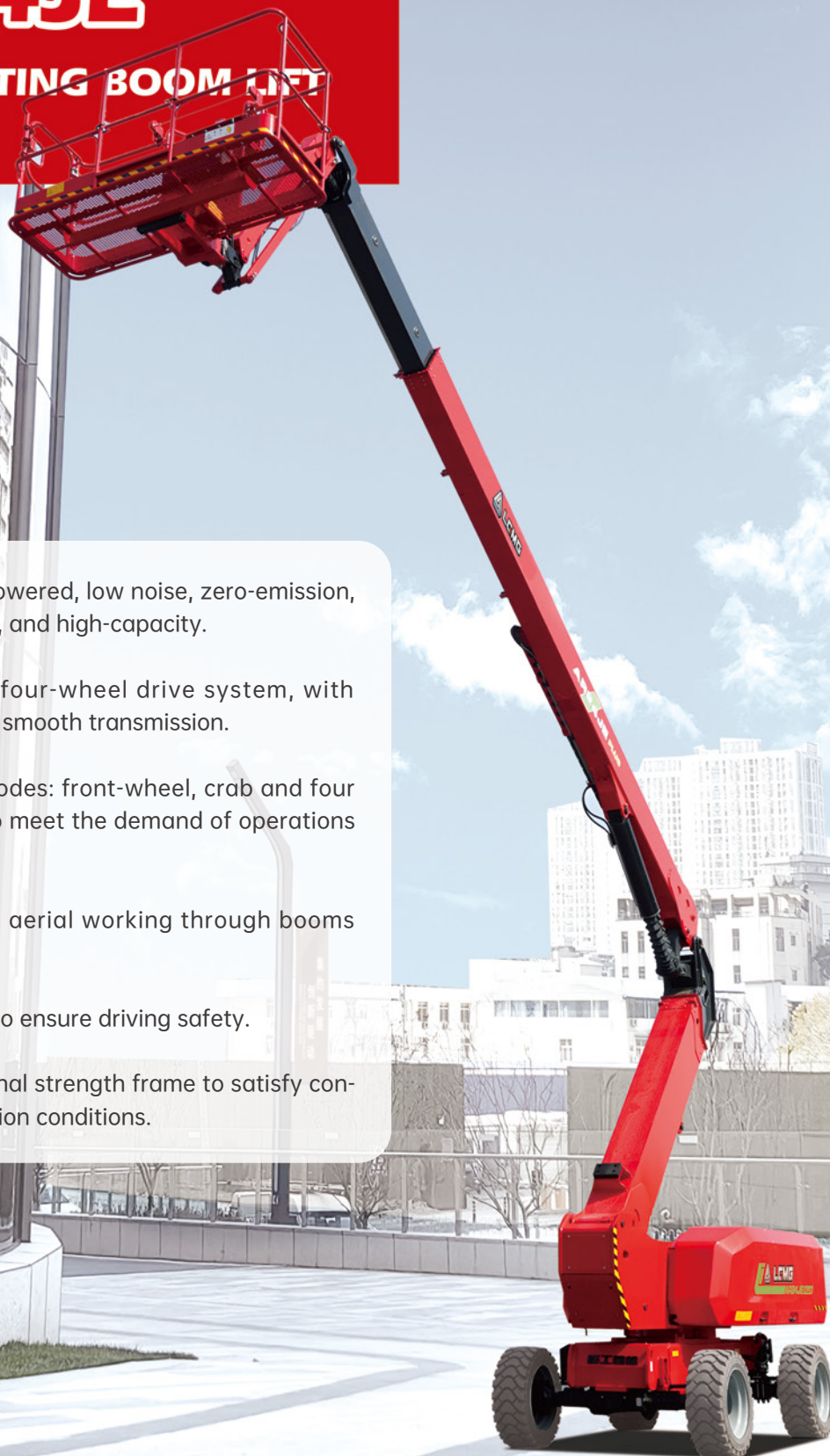


LGMG

AR24JE

ARTICULATING BOOM LIFT

- Lithium battery powered, low noise, zero-emission, maintenance-free, and high-capacity.
- Axle-integrated four-wheel drive system, with strong power and smooth transmission.
- Three steering modes: front-wheel, crab and four wheel steering, to meet the demand of operations in narrow space.
- Realize all-round aerial working through booms compound action.
- Full time floating to ensure driving safety.
- Higher anti-torsional strength frame to satisfy container transportation conditions.



LGMG Electric - Articulating Boom Lift

SPECIFICATIONS

MODELS	AR24JE (AR80JE)	
	Metric	Imperial
Measurements		
Work Height Max.	26.6m	87'3"
Platform Height Max.	24.6m	80'9"
Horizontal Outreach	18m	59'11"
Up and Over Height	8.83m	28'11"
Platform Length	2.44m	8'
Platform Width	0.9m	2'11"
A Stowed Length	11.6m	36'1"
Length-Transport (jib tucked)	9.07m	29'9"
B Overall Width	2.5m	8'2"
C Stowed Height	2.83m	9'3"
Height-Transport	3.36m	11'
D Wheelbase	2.85m	9'4"
E Ground Clearance	0.4m	1'4"

PRODUCTIVITY		
Platform Capacity (unrestricted)	250kg	551 lbs
Platform Capacity (restricted)	350kg	772 lbs
Max. Platform Occupancy	2 (unrestricted) / 3 (restricted)	
Turntable Rotation	360°	
Drive Speed-Stowed	5km/h	3.1mph
Drive Speed-Raised	0.8km/h	0.5mph
Gradeability	45%	
Max. Wind Speed	12.5m/s	28mph
Turning Radius-Inside	2.04m	6'8"
Turning Radius-Outside	4.13m	13'7"
Max.Slope	5°/5°	
Tires Type	Foam-filled non-marking	
Tires Models	15-625	

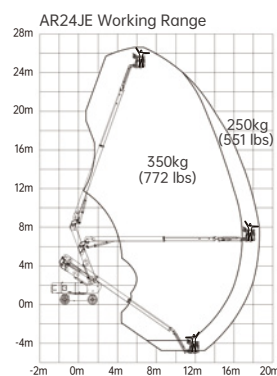
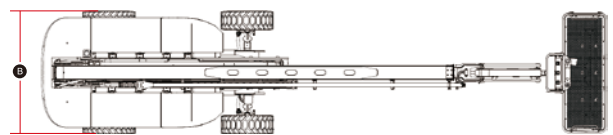
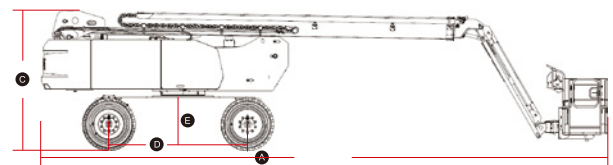
POWER		
Power Source	80V 460Ah	

HYDRAULIC SYSTEM		
Hydraulic Oil Volume	105L	27.7gal

WEIGHT		
Machine Weight	17,300kg	38,139 lbs

STANDARD FEATURES	
Proportional control	Emergency stop device
Horn/Hour meter	Auto-leveling platform
Full-height drive	Anti-collision protection
Flashing beacons	Over tilt protection system
Cylinder bellows	Platform control cover
Oscillating axle	Overload sensing system
Platform tool box	Intelligent diagnostic system
Telematics connector	Foam-filled non-marking tires

OPTIONAL	
Telematics	Solid tires
AC power to platform	Solid non-marking tires
Half-height mesh platform	Foam-filled tires
Auxiliary rail	Biodegradable hydraulic oil



Please contact LGMG or a local dealer for more details.

LGMG reserves the right to change technical data without prior notice. All photos and pictures in this brochure are for promotional purposes only.

LINGONG HEAVY MACHINERY CO., LTD.

Address: No. 2676, Kejia Road, Jinan, Shandong, China
 Email: sales@lmgm.com.cn Tel: +86 531 6787 9283

LGMG Europe B.V.

Address: Donker Duyvisweg 301, 3316 BL Dordrecht, The Netherlands
 Email: sales@lmgmeurope.com Tel: +31 850 642 777

LGMG North America Inc.

Address: 4105 Live Oak Drive, Suite 100, The Colony, Texas 75056 United States
 Email: sales@lmgmna.com Tel: +1 833 288 5464

www.lmgmlifts.com

LGMG
 RELIABILITY IN ACTION